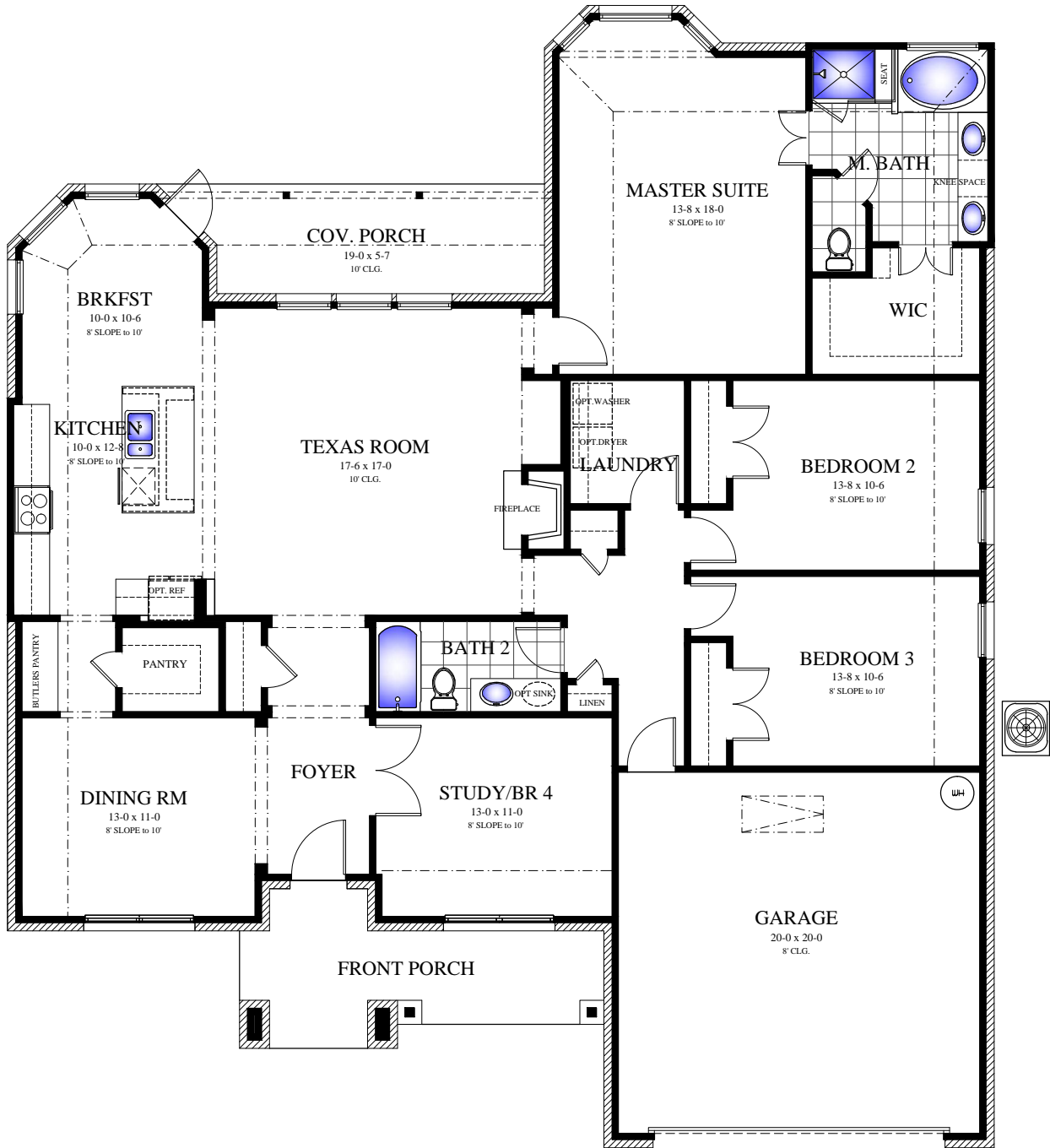




Sonya



4 Bedroom, 2 Bath, 2 Car Garage
A/C Sq. Ft. 2108, Total Sq. Ft. 2794



In the interest of continuous product improvements and to meet changing market conditions, the builder reserves the right to modify floor plans, exterior elevations, specifications, features, prices and product types without prior notice or obligation. Some features may vary from plan to plan. All plans, and elevation renderings are artist's conceptions and not necessarily to scale. All square footages are approximate. Window size, type and location may vary with each elevation.


Christopher Grace
Custom Homes, LLC



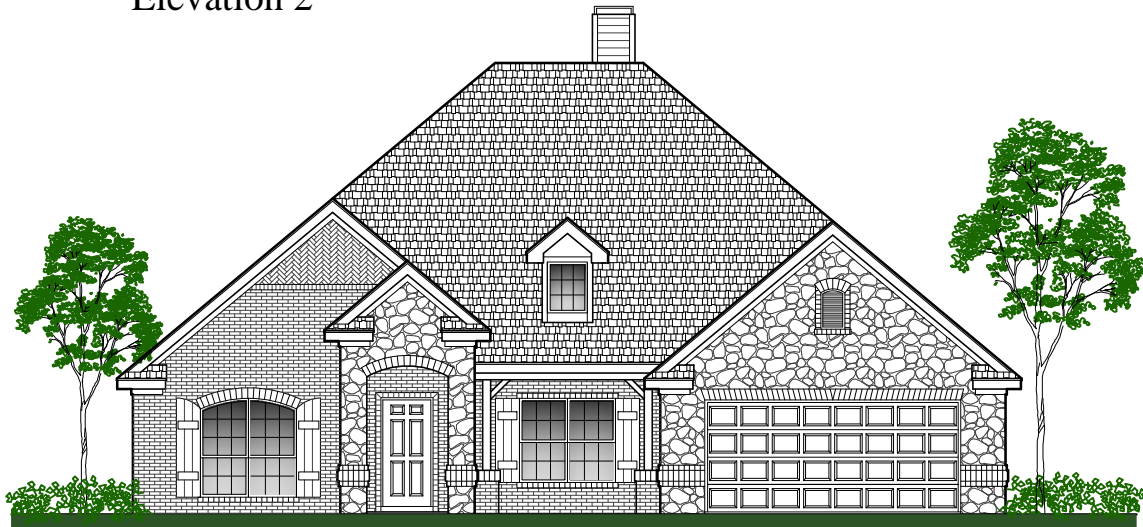
Sonya



Elevation 3



Elevation 2



Elevation 1



In the interest of continuous product improvements and to meet changing market conditions, the builder reserves the right to modify floor plans, exterior elevations, specifications, features, prices and product types without prior notice or obligation. Some features may vary from plan to plan. All plans, and elevation renderings are artist's conceptions and not necessarily to scale. All square footages are approximate. Window size, type and location may vary with each elevation.



Christopher Grace

Custom Homes, LLC